



Architecture By Design

SHEDS | BARNES | GARAGES | CABINS



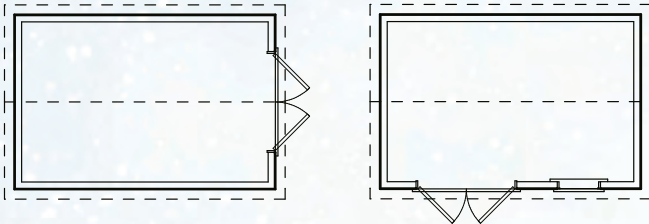
2025 CATALOG

Classic Series Garden Shed

| | | |
|-----------|-----------------|-----------------|
| 8' x 12' | \$6,200 | + Gutters \$240 |
| 10' x 10' | \$6,600 | + Gutters \$200 |
| 10' x 12' | \$7,200 | + Gutters \$240 |
| 10' x 16' | \$8,800 | + Gutters \$300 |
| 10' x 20' | \$10,350 | + Gutters \$360 |
| 12' x 16' | \$10,750 | + Gutters \$300 |
| 12' x 20' | \$12,500 | + Gutters \$360 |
| 12' x 24' | \$14,450 | + Gutters \$420 |

*Includes 54"-60" double doors.

Typical Layouts

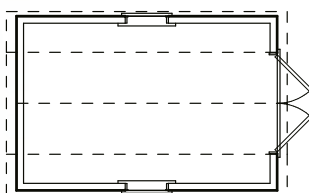


Classic Series Gambrel Barn

| | | |
|-----------|-----------------|-----------------|
| 8' x 12' | \$6,500 | + Gutters \$240 |
| 10' x 10' | \$6,850 | + Gutters \$200 |
| 10' x 12' | \$7,700 | + Gutters \$240 |
| 10' x 16' | \$9,450 | + Gutters \$300 |
| 10' x 20' | \$11,150 | + Gutters \$360 |
| 12' x 16' | \$11,600 | + Gutters \$300 |
| 12' x 20' | \$13,700 | + Gutters \$360 |
| 12' x 24' | \$15,850 | + Gutters \$420 |

*Includes 54"-60" double doors.

Typical Layouts



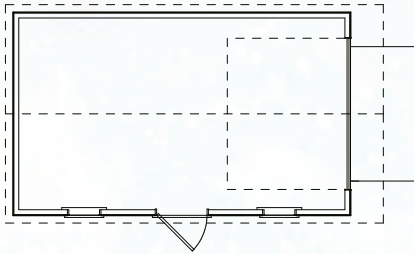
Classic Series Garage

| | | |
|------------|-----------------|-----------------|
| 10' x 16' | \$15,100 | + Gutters \$330 |
| 10' x 20' | \$16,800 | + Gutters \$390 |
| 12' x 16' | \$17,100 | + Gutters \$330 |
| 12' x 20' | \$19,150 | + Gutters \$390 |
| 12' x 24' | \$21,200 | + Gutters \$450 |
| 12' x 28' | \$23,200 | + Gutters \$510 |
| 14' x 24'* | \$22,850 | + Gutters \$450 |
| 14' x 28'* | \$25,100 | + Gutters \$510 |



*Includes PT HD floor and ramp, overhead door, 36" 6 panel entry door, (2) 24x27 windows, 92" walls. * 14' wide buildings measured on eaves, not framing

Typical Layouts



Heritage Series Old West

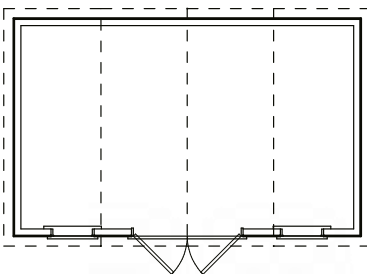
| | | |
|------------|-----------------|-----------------|
| 8' x 16' | \$9,500 | + Gutters \$200 |
| 10' x 16' | \$11,050 | + Gutters \$200 |
| 10' x 20' | \$12,800 | + Gutters \$200 |
| 12' x 16' | \$13,300 | + Gutters \$240 |
| 12' x 20' | \$15,500 | + Gutters \$240 |
| 14' x 16'* | \$14,750 | + Gutters \$270 |
| 14' x 20'* | \$17,100 | + Gutters \$270 |



*Includes double doors w/wood sash windows, (2) 24x36 windows.

* 14' wide buildings measured at the eaves, not the framing

Typical Layouts

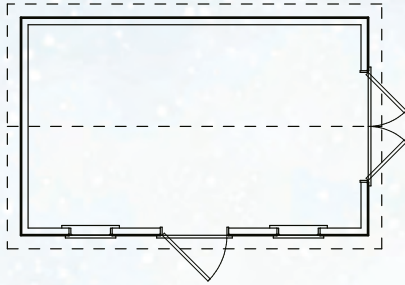


Heritage Series Garden Shed

| | | |
|-----------|-----------------|-----------------|
| 8' x 12' | \$7,700 | + Gutters \$240 |
| 10' x 10' | \$8,100 | + Gutters \$200 |
| 10' x 12' | \$8,800 | + Gutters \$240 |
| 10' x 16' | \$10,500 | + Gutters \$300 |
| 10' x 20' | \$12,000 | + Gutters \$360 |
| 12' x 16' | \$12,500 | + Gutters \$300 |
| 12' x 20' | \$14,500 | + Gutters \$360 |
| 12' x 24' | \$16,450 | + Gutters \$420 |

*Includes 54"-60" double doors with 60" transom, 36" single door w/transom, (2) 24x36 windows.

Typical Layouts

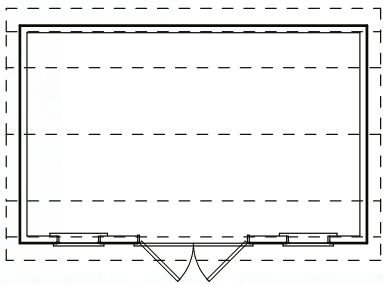


Heritage Series Gambrel Barn

| | | |
|-----------|-----------------|-----------------|
| 8' x 12' | \$7,650 | + Gutters \$240 |
| 10' x 10' | \$8,000 | + Gutters \$200 |
| 10' x 12' | \$8,900 | + Gutters \$240 |
| 10' x 16' | \$10,650 | + Gutters \$300 |
| 10' x 20' | \$12,400 | + Gutters \$360 |
| 12' x 16' | \$12,900 | + Gutters \$300 |
| 12' x 20' | \$15,100 | + Gutters \$360 |
| 12' x 24' | \$17,250 | + Gutters \$420 |

*Includes 54"-60" double doors w/transom, (2) 24x36 windows.

Typical Layouts

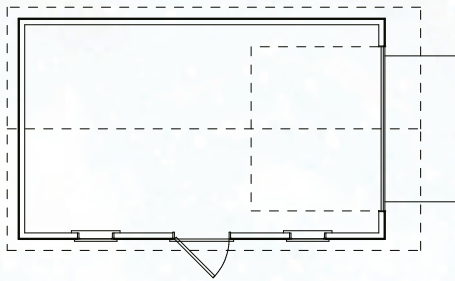


Heritage Series Garage

| | | |
|------------|-----------------|-----------------|
| 10' x 16' | \$16,500 | + Gutters \$330 |
| 10' x 20' | \$18,250 | + Gutters \$390 |
| 12' x 16' | \$18,600 | + Gutters \$330 |
| 12' x 20' | \$20,600 | + Gutters \$390 |
| 12' x 24' | \$22,700 | + Gutters \$450 |
| 12' x 28' | \$24,750 | + Gutters \$510 |
| 14' x 24'* | \$24,250 | + Gutters \$450 |
| 14' x 28'* | \$26,600 | + Gutters \$510 |

*Includes PT HD floor and ramp, overhead door, 36" 9-lite entry door, (2) 24x36 windows, timber kneebraces. * 14' wide buildings measured on eaves, not framing.

Typical Layouts

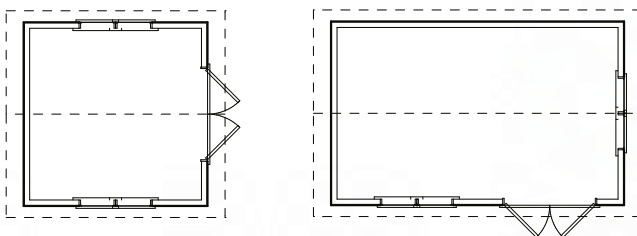


Farmhouse Series Garden Shed

| | | |
|--------------|-----------------|-----------------|
| 8' x 8' | \$10,200 | + Gutters \$175 |
| 8' x 12' | \$11,850 | + Gutters \$255 |
| 8' x 16' | \$13,500 | + Gutters \$315 |
| 10' x 10' | \$12,300 | + Gutters \$215 |
| 10' x 12' | \$13,250 | + Gutters \$255 |
| 10' x 16' | \$15,200 | + Gutters \$315 |
| SE 10' x 16' | \$15,850 | + Gutters \$315 |
| 10' x 20' | \$17,150 | + Gutters \$375 |
| SE 10' x 20' | \$17,800 | + Gutters \$375 |

*Includes double doors w/wood sash windows, timber eyebrow, (4) 24x36 windows w/transoms, (1) gable window. Side Entry includes double doors w/wood sash windows, 8' dormer w/5 windows, (2) 24x36 windows w/transoms.

Typical Layouts

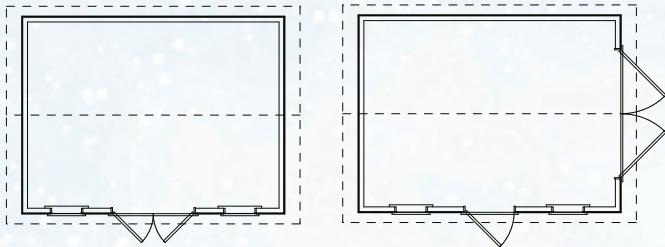


Craftsman Series Workshop

| | | |
|------------|----------|-----------------|
| 10' x 16' | \$15,100 | + Gutters \$315 |
| 10' x 20' | \$17,300 | + Gutters \$375 |
| 12' x 16' | \$18,350 | + Gutters \$315 |
| 12' x 20' | \$21,150 | + Gutters \$375 |
| 12' x 24' | \$23,900 | + Gutters \$435 |
| 14' x 20'* | \$23,450 | + Gutters \$375 |
| 14' x 24'* | \$26,500 | + Gutters \$435 |
| 14' x 28'* | \$29,550 | + Gutters \$495 |

*Includes 60" double doors w/transom, (2) 24x36 windows w/transoms, (1) 24x27 gable window. * 14' wide buildings measured at the eaves, not framing.

Typical Layouts

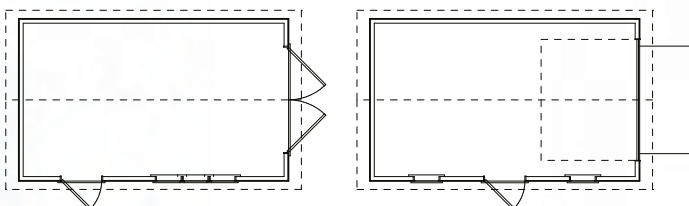


Craftsman Series Garage

| | | |
|------------|----------|-----------------|
| 12' x 16' | \$20,800 | + Gutters \$315 |
| 12' x 20' | \$23,550 | + Gutters \$375 |
| 12' x 24' | \$26,350 | + Gutters \$435 |
| 12' x 28' | \$29,150 | + Gutters \$495 |
| 14' x 20'* | \$30,850 | + Gutters \$375 |
| 14' x 24'* | \$34,850 | + Gutters \$435 |
| 14' x 28'* | \$38,900 | + Gutters \$495 |

*Includes PT HD floor and ramp, overhead door, 36" 9-lite entry door, (2) 24x36 windows w/transoms, (1) 24x27 gable window. * 14' wide buildings measured at the eaves, not framing.

Typical Layouts



Site Preparation

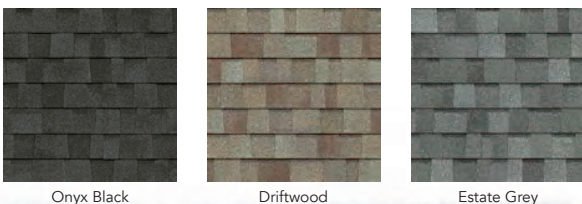
MiniBuilt requires a firm, well-drained foundation for guaranteeing the longevity of the structure. We recommend a pad 6" deep, with landscape fabric below, 3/4" clear crush rock (not road mulch), laser levelled and compacted. Low or soft areas of the pad will likely result in doors not operating properly. The pad should extend 1 foot beyond all sides of the structure. A 10' x 12' building requires a 12' x 14' pad. While some homeowners may choose to prepare the site themselves, larger structures require qualified contractors to prepare the site. MiniBuilt offers this service in the Lower Mainland.



Paint Colours *(James Hardie Colours)*



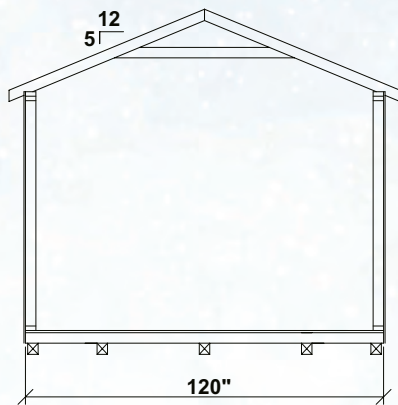
Shingle Colours



Special Note:

*Structures shown may include additional features not included in base pricing. ALL STRUCTURES ARE DESIGNED FOR 3 SEASON USE. UPGRADES TO 4 SEASON USE AVAILABLE, SEE SALESMAN FOR MORE DETAILS. All structures are accessory buildings only and are not to be mistaken for tiny homes, primary dwellings, or secondary dwellings. Not responsible for typographical errors. Prices subject to change without notice.

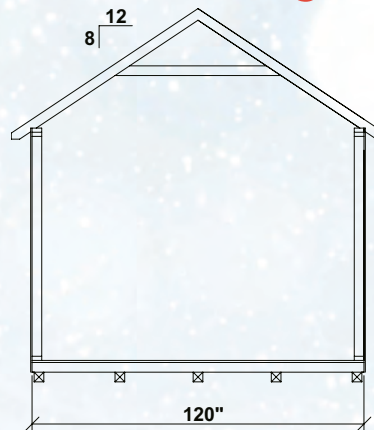
Classic Series



- 80" Wall Height
- 5/12 Pitch Roof
- 5" overhangs
- 1x3 Combface trim
- Basic Hinges and Hardware
- Available in 8'-14' widths*



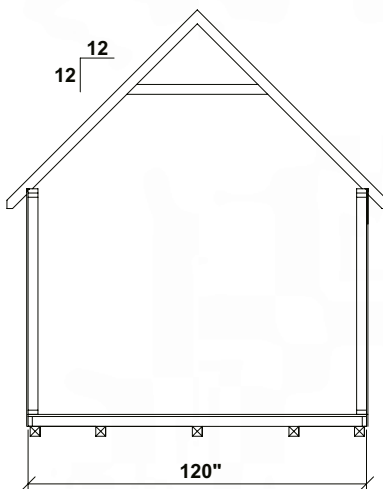
Heritage Series



- 84" Wall Height
- 8/12 Pitch Roof
- 7" Overhangs
- 1x4 Combface trim
- Larger Hinges & Hardware accents
- Transom windows either above or in door
- Space for small loft
- Available in 8'-14' widths*



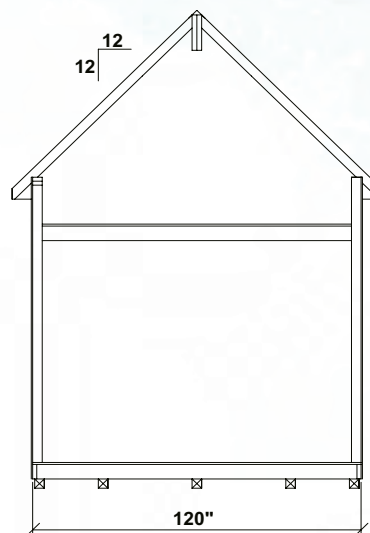
Farmhouse Series



- 80" Wall Height
- 12/12 Pitch Roof
- 7" Eave, 12" Gable overhang
- 1x4 Combface trim
- Board and Batten
- Larger hinges & Hardware accents
- Wood-Sash windows in doors
- Transom windows standard
- Space for small loft
- Dormers available (standard on side entry)
- Available in 8' & 10' widths



Craftsman Series



- 108" Wall Height
- 12/12 Pitch Roof
- 7" Overhangs
- 1x4 trim
- Larger Hinges & Hardware
- Transom windows standard
- Space for stand-up loft
- Available in 10' -14' widths*

