



# Architecture By Design

SHEDS | BARNES | GARAGES | CABINS



## FALL/SPRING CATALOG

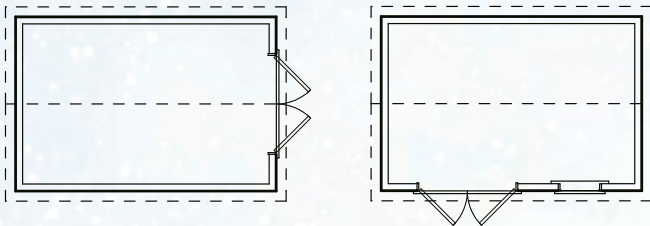


## Classic Series Garden Shed

8' x 12'	\$5,800	+ Gutters \$240
10' x 10'	\$6,200	+ Gutters \$200
10' x 12'	\$6,900	+ Gutters \$240
10' x 16'	\$8,500	+ Gutters \$300
10' x 20'	\$9,950	+ Gutters \$360
12' x 16'	\$10,300	+ Gutters \$300
12' x 20'	\$12,150	+ Gutters \$360
12' x 24'	\$13,950	+ Gutters \$420

\*Includes 54"-60" double doors.

### Typical Layouts

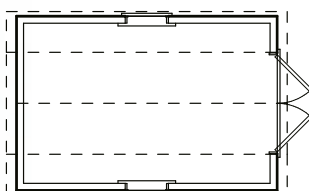


## Classic Series Gambrel Barn

8' x 12'	\$6,500	+ Gutters \$240
10' x 10'	\$6,850	+ Gutters \$200
10' x 12'	\$7,700	+ Gutters \$240
10' x 16'	\$9,450	+ Gutters \$300
10' x 20'	\$11,150	+ Gutters \$360
12' x 16'	\$11,600	+ Gutters \$300
12' x 20'	\$13,700	+ Gutters \$360
12' x 24'	\$15,850	+ Gutters \$420

\*Includes 54"-60" double doors.

### Typical Layouts



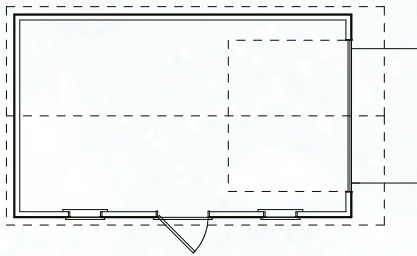


## Classic Series Garage

10' x 16'	<b>\$14,100</b>	+ Gutters \$330
10' x 20'	<b>\$15,800</b>	+ Gutters \$390
12' x 16'	<b>\$16,100</b>	+ Gutters \$330
12' x 20'	<b>\$18,150</b>	+ Gutters \$390
12' x 24'	<b>\$20,200</b>	+ Gutters \$450
12' x 28'	<b>\$22,200</b>	+ Gutters \$510
14' x 24'*	<b>\$21,850</b>	+ Gutters \$450
14' x 28'*	<b>\$24,100</b>	+ Gutters \$510

\*Includes PT HD floor and ramp, overhead door, 36" 6 panel entry door, (2) 24x27 windows, 92" walls. \* 14' wide buildings measured on eaves, not framing

### Typical Layouts



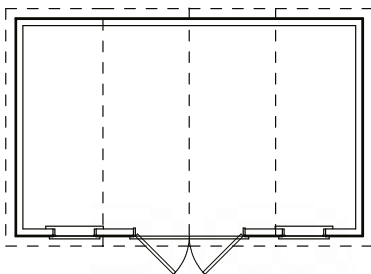
## Heritage Series Old West

8' x 16'	<b>\$9,500</b>	+ Gutters \$200
10' x 16'	<b>\$11,050</b>	+ Gutters \$200
10' x 20'	<b>\$12,800</b>	+ Gutters \$200
12' x 16'	<b>\$13,300</b>	+ Gutters \$240
12' x 20'	<b>\$15,500</b>	+ Gutters \$240
14' x 16'*	<b>\$14,750</b>	+ Gutters \$270
14' x 20'*	<b>\$17,100</b>	+ Gutters \$270

\*Includes double doors w/wood sash windows, (2) 24x36 windows.

\* 14' wide buildings measured at the eaves, not the framing

### Typical Layouts



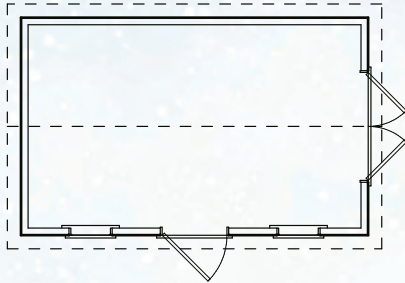


## Heritage Series Garden Shed

8' x 12'	<b>\$7,350</b>	+ Gutters \$240
10' x 10'	<b>\$7,700</b>	+ Gutters \$200
10' x 12'	<b>\$8,500</b>	+ Gutters \$240
10' x 16'	<b>\$10,100</b>	+ Gutters \$300
10' x 20'	<b>\$11,650</b>	+ Gutters \$360
12' x 16'	<b>\$12,050</b>	+ Gutters \$300
12' x 20'	<b>\$14,000</b>	+ Gutters \$360
12' x 24'	<b>\$15,900</b>	+ Gutters \$420

\*Includes 54"-60" double doors with 60" transom, 36" single door w/transom, (2) 24x36 windows.

### Typical Layouts

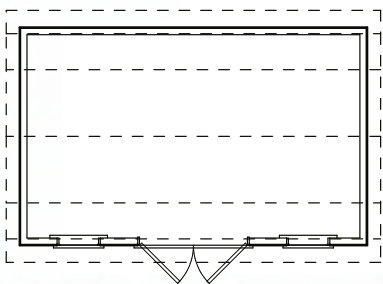


## Heritage Series Gambrel Barn

8' x 12'	<b>\$7,650</b>	+ Gutters \$240
10' x 10'	<b>\$8,000</b>	+ Gutters \$200
10' x 12'	<b>\$8,900</b>	+ Gutters \$240
10' x 16'	<b>\$10,650</b>	+ Gutters \$300
10' x 20'	<b>\$12,400</b>	+ Gutters \$360
12' x 16'	<b>\$12,900</b>	+ Gutters \$300
12' x 20'	<b>\$15,100</b>	+ Gutters \$360
12' x 24'	<b>\$17,250</b>	+ Gutters \$420

\*Includes 54"-60" double doors w/transom, (2) 24x36 windows.

### Typical Layouts



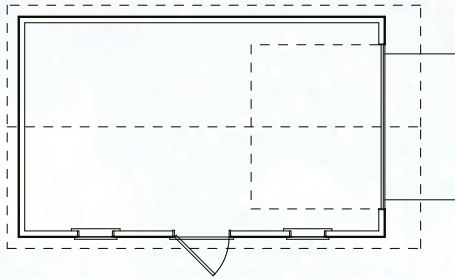


## Heritage Series Garage

10' x 16'	<b>\$15,500</b>	+ Gutters \$330
10' x 20'	<b>\$17,250</b>	+ Gutters \$390
12' x 16'	<b>\$17,600</b>	+ Gutters \$330
12' x 20'	<b>\$19,600</b>	+ Gutters \$390
12' x 24'	<b>\$21,700</b>	+ Gutters \$450
12' x 28'	<b>\$23,750</b>	+ Gutters \$510
14' x 24'*	<b>\$23,250</b>	+ Gutters \$450
14' x 28'*	<b>\$25,600</b>	+ Gutters \$510

\*Includes PT HD floor and ramp, overhead door, 36" 9-lite entry door, (2) 24x36 windows, timber kneebraces. \* 14' wide buildings measured on eaves, not framing.

### Typical Layouts

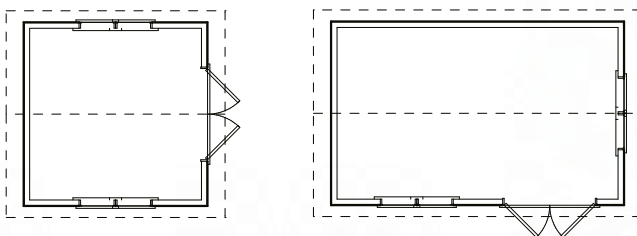


## Farmhouse Series Garden Shed

8' x 8'	<b>\$9,200</b>	+ Gutters \$175
8' x 12'	<b>\$10,850</b>	+ Gutters \$255
8' x 16'	<b>\$12,500</b>	+ Gutters \$315
10' x 10'	<b>\$11,300</b>	+ Gutters \$215
10' x 12'	<b>\$12,250</b>	+ Gutters \$255
10' x 16'	<b>\$14,200</b>	+ Gutters \$315
SE 10' x 16'	<b>\$14,850</b>	+ Gutters \$315
10' x 20'	<b>\$16,150</b>	+ Gutters \$375
SE 10' x 20'	<b>\$16,800</b>	+ Gutters \$375

\*Includes double doors w/wood sash windows, timber eyebrow, (4) 24x36 windows w/transoms, (1) gable window. Side Entry includes double doors w/wood sash windows, 8' dormer w/5 windows, (2) 24x36 windows w/transoms.

### Typical Layouts



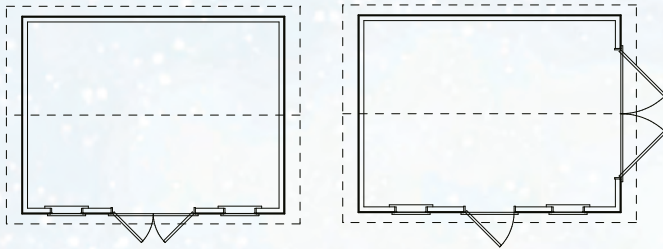


## Craftsman Series Workshop

10' x 16'	<b>\$15,100</b>	+ Gutters \$315
10' x 20'	<b>\$17,300</b>	+ Gutters \$375
12' x 16'	<b>\$18,350</b>	+ Gutters \$315
12' x 20'	<b>\$21,150</b>	+ Gutters \$375
12' x 24'	<b>\$23,900</b>	+ Gutters \$435
14' x 20'*	<b>\$23,450</b>	+ Gutters \$375
14' x 24'*	<b>\$26,500</b>	+ Gutters \$435
14' x 28'*	<b>\$29,550</b>	+ Gutters \$495

\*Includes 60" double doors w/transom, (2) 24x36 windows w/transoms, (1) 24x27 gable window. \* 14' wide buildings measured at the eaves, not framing.

### Typical Layouts

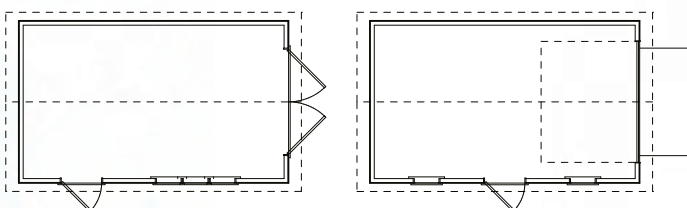


## Craftsman Series Garage

12' x 16'	<b>\$20,800</b>	+ Gutters \$315
12' x 20'	<b>\$23,550</b>	+ Gutters \$375
12' x 24'	<b>\$26,350</b>	+ Gutters \$435
12' x 28'	<b>\$29,150</b>	+ Gutters \$495
14' x 20'*	<b>\$30,850</b>	+ Gutters \$375
14' x 24'*	<b>\$34,850</b>	+ Gutters \$435
14' x 28'*	<b>\$38,900</b>	+ Gutters \$495

\*Includes PT HD floor and ramp, overhead door, 36" 9-lite entry door, (2) 24x36 windows w/transoms, (1) 24x27 gable window. \* 14' wide buildings measured at the eaves, not framing.

### Typical Layouts





# Site Preparation

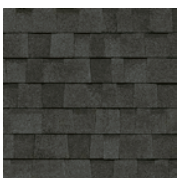
MiniBuilt requires a firm, well-drained foundation for guaranteeing the longevity of the structure. We recommend a pad 6" deep, with landscape fabric below, 3/4" clear crush rock (not road mulch), laser levelled and compacted. Low or soft areas of the pad will likely result in doors not operating properly. The pad should extend 1 foot beyond all sides of the structure. A 10' x 12' building requires a 12' x 14' pad. While some homeowners may choose to prepare the site themselves, larger structures require qualified contractors to prepare the site. MiniBuilt offers this service in the Lower Mainland.



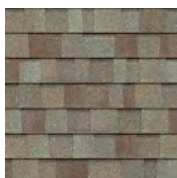
## Paint Colours *(James Hardie Colours)*



## Shingle Colours



Onyx Black



Driftwood



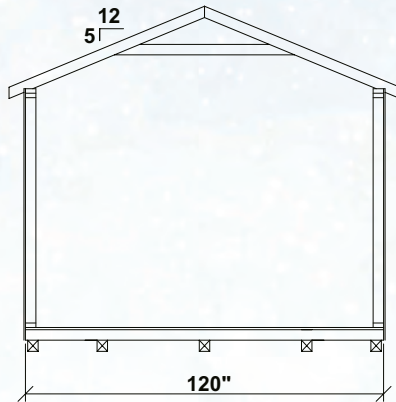
Estate Grey

### Special Note:

\*Structures shown may include additional features not included in base pricing. ALL STRUCTURES ARE DESIGNED FOR 3 SEASON USE. UPGRADES TO 4 SEASON USE AVAILABLE, SEE SALESMAN FOR MORE DETAILS. All structures are accessory buildings only and are not to be mistaken for tiny homes, primary dwellings, or secondary dwellings. Not responsible for typographical errors. Prices subject to change without notice.



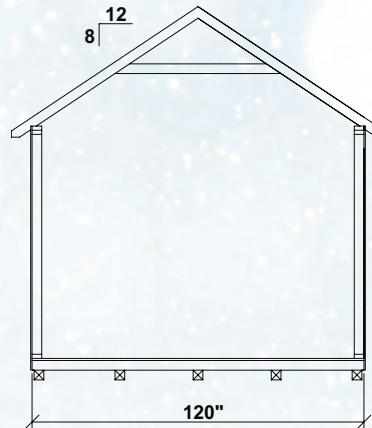
## Classic Series



- 80" Wall Height
- 5/12 Pitch Roof
- 5" overhangs
- 1x3 Combface trim
- Basic Hinges and Hardware
- Available in 8'-14' widths\*



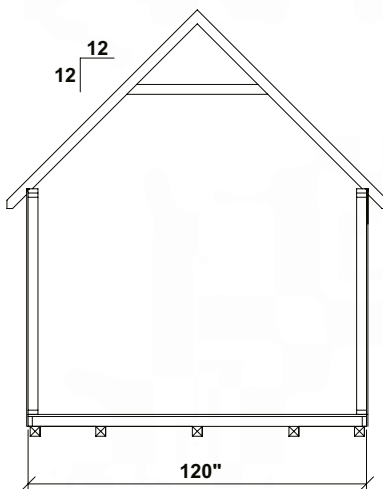
## Heritage Series



- 84" Wall Height
- 8/12 Pitch Roof
- 7" Overhangs
- 1x4 Combface trim
- Larger Hinges & Hardware accents
- Transom windows either above or in door
- Space for small loft
- Available in 8'-14' widths\*



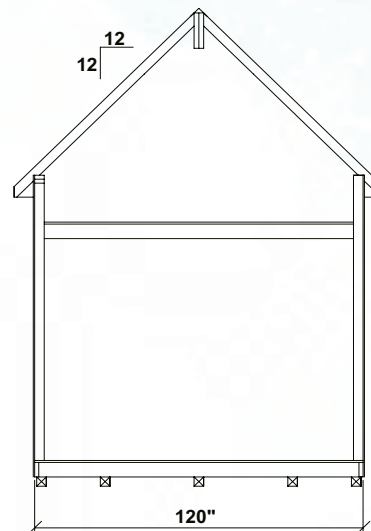
## Farmhouse Series



- 80" Wall Height
- 12/12 Pitch Roof
- 7" Eave, 12" Gable overhang
- 1x4 Combface trim
- Board and Batten
- Larger hinges & Hardware accents
- Wood-Sash windows in doors
- Transom windows standard
- Space for small loft
- Dormers available (standard on side entry)
- Available in 8' & 10' widths



## Craftsman Series



- 108" Wall Height
- 12/12 Pitch Roof
- 7" Overhangs
- 1x4 trim
- Larger Hinges & Hardware
- Transom windows standard
- Space for stand-up loft
- Available in 10' -14' widths\*



\*14' wide buildings measured at eaves vs framing.